

Safety Improvement Area: Mary's Well intersection, at the junction of HaGalil & Paulus HaShishi streets near the city center

Problem: Perceived pedestrian safety and comfort

Measures: Small-scale and localised changes in strategic urbanism

Goals: Improved pedestrian user experience

Target Groups: Pedestrians, especially local residents, tourists, children, the elderly, and the disabled

Stakeholders: Nazareth Municipality, National Road Safety Authority, Ministry of Transport, nearby schools, nearby business owners, residents, and civil society organizations.



Mary's Well Intersection

POPULATIONS AND DEMOGRAPHICS

Area: 14.2 km²

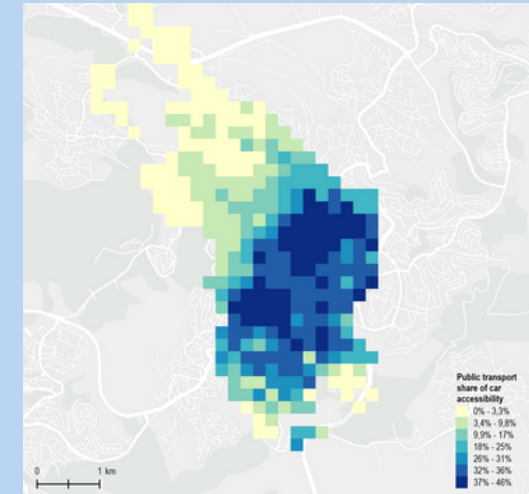
Population: 78,007 (2022)

Unemployment: 20.2% (2022)

Source: [CBS-Israel](#)

INFRASTRUCTURE AND ACCESSIBILITY

Relative Competitiveness of Public Transportation



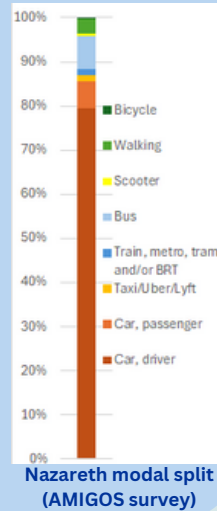
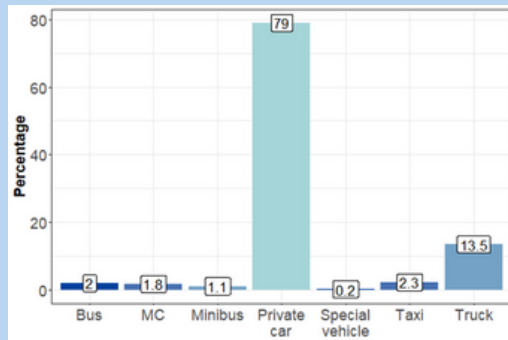
Car Ownership Rate: 39 cars / 100 inhabitants

(Source: [CBS-Israel](#), 2022)

Public Transport Modes: Bus

Modal Share by km in Israel (2021)

TRAVEL BEHAVIOUR

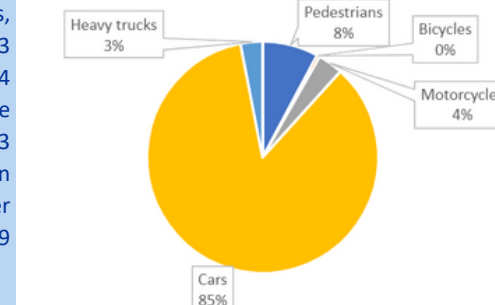


ROAD SAFETY

Over the 5-year period from June 2018 to June 2023, Nazareth recorded 2,761 road crashes, resulting in 9 fatalities, 53 severe injuries, and 4,144 mild injuries. The average yearly mortality rate is 23 deaths / million inhabitants, notably lower than Israel's average of 39 in 2019.

Source: <https://geo.mot.gov.il/>

Road fatalities split by mode user group (2018-2023; 3565 victims)



Road victims by age category (2018-2023; 4117 victims)

