

Safety Improvement area: Las Matas neighbourhood

Problem: Isolation from the rest of the municipality by large highways

Measures: Create multimodal mobility areas that includes parking for personal mobility vehicles, improve bike lanes, public transport stops, explore new mobility solutions (carpooling, carsharing)

Goals: Enhance mobility solutions with a specific emphasis on optimising bike & pedestrians routes to schools and commuter trips

Target groups: Local residents, individuals with disabilities and reduced mobility, tourists, commuters and drivers

Stakeholders: Local municipality, companies in the area, neighbours of the area, commuters, district school and universities (affected by the train station accessibility)



POPULATIONS AND DEMOGRAPHICS

Area: 59 km²

Population: 95,725 (2022)

Population density: 1,527 inh./km²

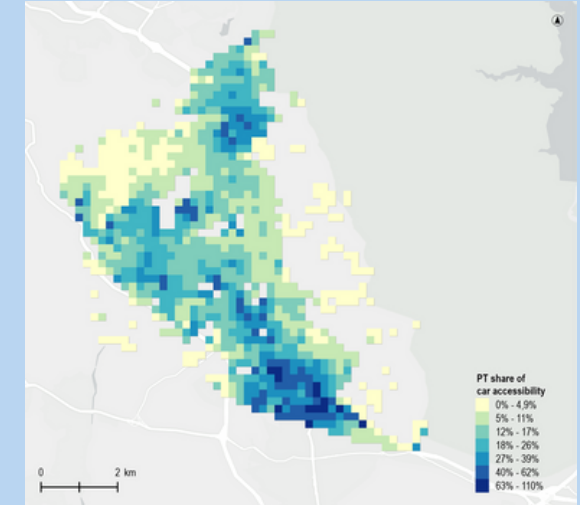
Unemployment: 4.61% (2023)

Population increase 2000-2015: +18.5%

Median age: 37.5

INFRASTRUCTURE AND ACCESSIBILITY

Competitiveness public transport vs. car:



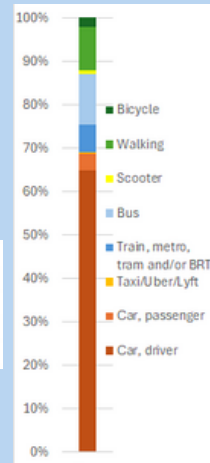
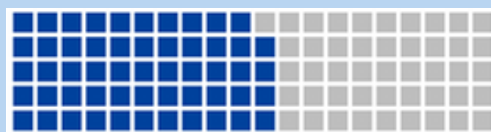
TRAVEL BEHAVIOUR

Car ownership rate: 54 cars / 100 inhabitants (2023)

Public transport modes: bus, train

Public transport ridership trends:

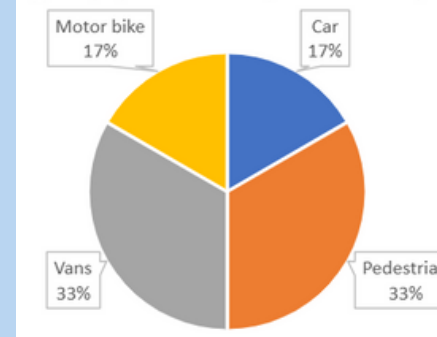
Number of private cars per 100 inhabitants



Las Rozas modal split (AMIGOS survey)

ROAD SAFETY

Road fatalities split by mode user group (2016-2022; 6 fatalities)



Road safety victims in Las Rozas, 2016-2022

