

Safety Improvement area: Lauritsala school and kindergarten

Problem: Several locations with potential accidental risks

Measures: Modernisation/deployment of ticket and payment systems; Enhancement cycling / walking; On-demand traffic within the ticket and payment system and public transport services, and the development of urban sustainable mobility

Goals: Safety improvement, carbon neutrality by 2030

Target groups: Local residents, including children, drivers, cyclists, elderly people and people with reduced mobility

Stakeholders: Regional Public transportation, transport operators, scooter company Tier and city bikes company Kaakau, civil society associations.



POPULATIONS AND DEMOGRAPHICS

Area: 1724 km²

Population: 72.7K (2022)

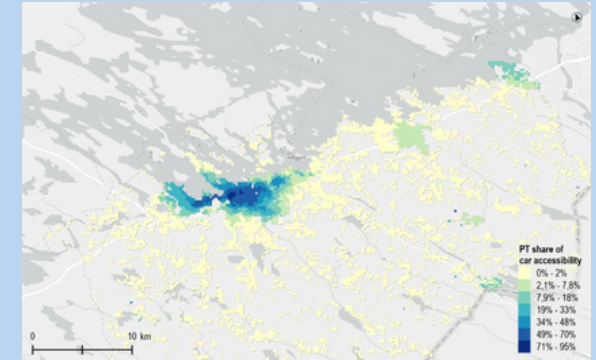
Population density: 50.68 inh./km²

Unemployment rate: 11.62% (15-64 years, 2020)

Share of higher educated: 31.9% (2019)

INFRASTRUCTURE AND ACCESSIBILITY

Competitiveness public transport relative to car:

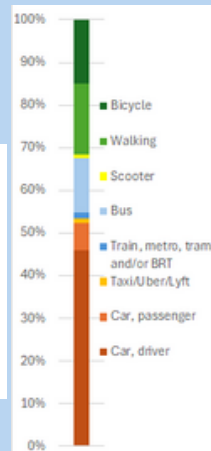
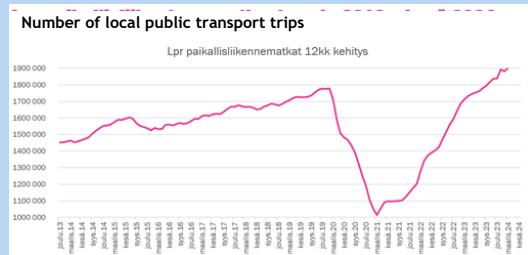


TRAVEL BEHAVIOUR

Car ownership rate: 52 cars / 100 inhabitants (2022)

Public transport modes: buses

Public transport ridership trends:



Lappeenranta modal split (AMIGOS survey)

ROAD SAFETY

