

Safety Improvement area: A two-way road (Bağdat Cad.)

Problem: Air quality, noise, car dependency

Measures: Pedestrianisation in the SIA. Measurements of noise and air quality will be conducted both before and after intervention.

Goals: Quality of life improvement

Target groups: Local residents, with a special focus on vulnerable individuals, public transport users, car drivers, cyclists, pedestrians, local businesses

Stakeholders: City and local governments (Mukhtar), environmental agencies, business groups, civil society organisations, associations for people with disability or reduced mobility.



POPULATIONS AND DEMOGRAPHICS

Area: 5,343 km²

Population: 15.9M (2022)

Population density (urban area): 5,930 inh./km²

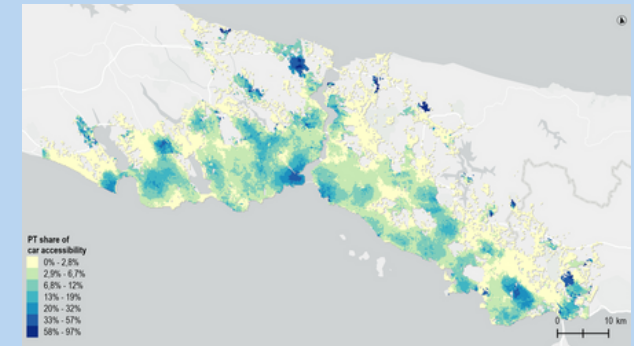
Population density (metropolitan area): 2,930 inh./km²

Mean years of schooling: 10.0

Unemployment: 9,2% (Turkey total, 2023)

INFRASTRUCTURE AND ACCESSIBILITY

Competitiveness public transport vs. car:



TRAVEL BEHAVIOUR

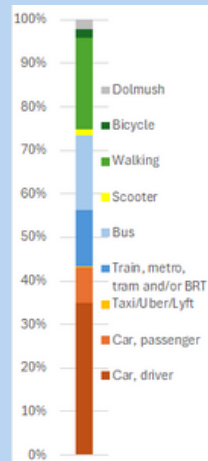
Car ownership rate: 22 cars / 100 inhabitants (2023)

Public transport trends (Municipality of Istanbul data):

- 35 % of trips in Istanbul is done by public transport.
- 12M daily boardings by public transport.
- Public transport trip modal shares (2022): Bus (26%), metrobus-BRT (7%), shuttle (13%), minibus (17%), Dolmush taxi (13%), metro (13%), tram (5%), rail (4%), ferry (2%). There is also a cable car.

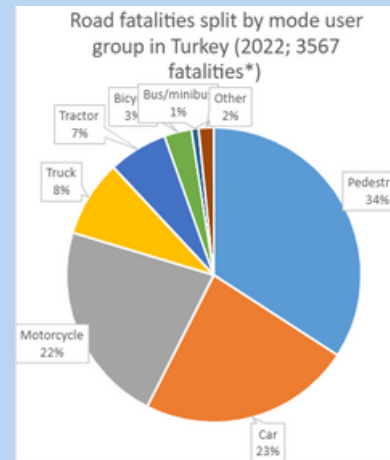
Walking and cycling (Municipality of Istanbul data):

- 45% of trips in Istanbul is done by foot
- <1% is done by bicycle



Istanbul modal split (AMIGOS survey)

ROAD SAFETY



*The total number of traffic fatalities in 2022 in Turkey was 5229; the 1662 fatalities not mentioned in this graph were classified as "passengers".

Road safety victims in Istanbul, 2015-2022

