

**Safety Improvement area:** School at Rellinger Straße (borough of Eimsbüttel)  
**Problem:** Conflicts involving pedestrians and cyclists, particularly including small children, and improve co-habitation of cyclists and pedestrians / playing kids  
**Measure:** Closure of a 60m section of the street for car traffic, inspired by the superblock approach in Barcelona  
**Goals:** Create a more secure environment for pedestrians and cyclists  
**Living lab:** In school surroundings, joint with national project Reallab focusing safety, where AMIGOS emphasizes the inclusivity dimension.  
**Target groups:** Public sector and citizens (including residents, teachers, parents)  
**Stakeholders:** Borough Council, Transport Ministry, police department, head of schools, parents' representatives.

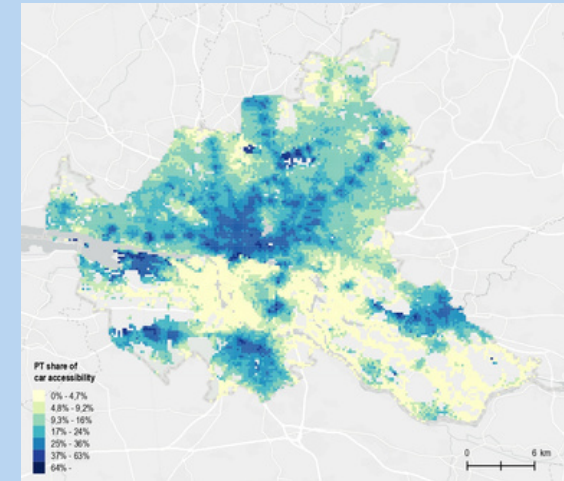


### POPULATIONS AND DEMOGRAPHICS

**Area:** 755.1 km<sup>2</sup>  
**Population:** 1.89M (2022)  
**Population density:** 2,455 inh./km<sup>2</sup>  
**Unemployment rate:** 6.4% (15-64 years, 2020)  
**Share of higher educated:** 29.6% (2019)  
**Single households:** 54.5% (2022)  
**Households with children:** 18% (2022)

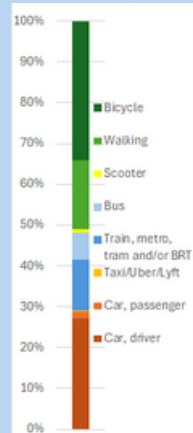
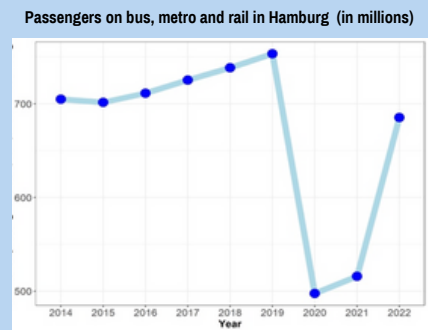
### INFRASTRUCTURE AND ACCESSIBILITY

Competitiveness public transport relative to car:



### TRAVEL BEHAVIOUR

**Car ownership rate:** 43 cars / 100 inhabitants (2022)  
**Public transport modes:** buses, metros, trains, ferries  
**Public transport ridership trends:**



### ROAD SAFETY

