

Safety Improvement area: School area (Saints Cyril and Methodious)

Problem: Car dependency, road safety

Measures: Reduce parental driving to and from the public school, increase reliance on public transport and active mobility; design a new cycling infrastructure; enhancing traffic management and safety to encourage walking and cycling

Goals: Improve safety conditions for students in the school area

Living lab: 20km new bikelanes, traffic analyses in 11 crossings

Target groups: Local residents, car drivers, children and teenagers, parents' associations, pedestrians, cyclists.

Stakeholders: district authorities, municipal transport companies, the regional Directorate of Education, schools, sport departments and police offices, city architects.



POPULATIONS AND DEMOGRAPHICS

Area: 234 km² (city)

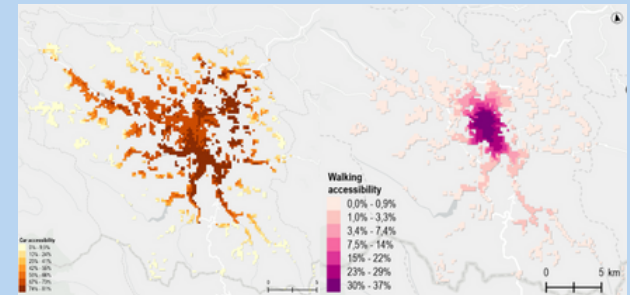
Population: 48.1K (2022)

Population density: 210 inh./km²

Unemployment rate: 11.62% (15-64 years, 2020)

INFRASTRUCTURE AND ACCESSIBILITY

Car and walking accessibility analyses:

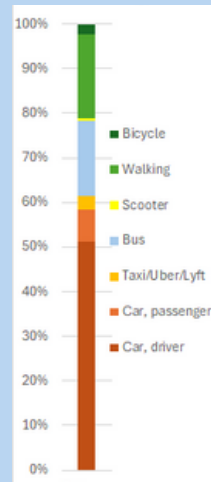
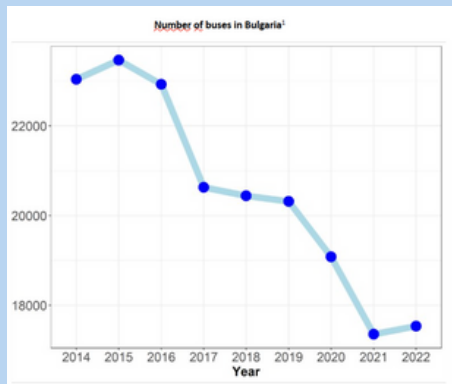


Car ownership rate: 41 cars / 100 inhabitants (2022)

Public (and other) transport modes: buses (and taxis)

Public transport ridership trends:

TRAVEL BEHAVIOUR



Gabrovo modal split (AMIGOS survey)

ROAD SAFETY

Number of road fatalities/injuries

7 road fatalities and 114 road injuries in the Gabrovo region

Mortality rate for road fatalities in Gabrovo: 73 per million people.

Injury rate: 12 per 10,000 people.

Gabrovo road fatality mortality and injury rates are slightly better than the Bulgarian averages of 82 and 13 respectively.

Road victims split by mode user group:

